

Klamath

Model: 4P56S49

4G28563A

1512 Sq.Ft.

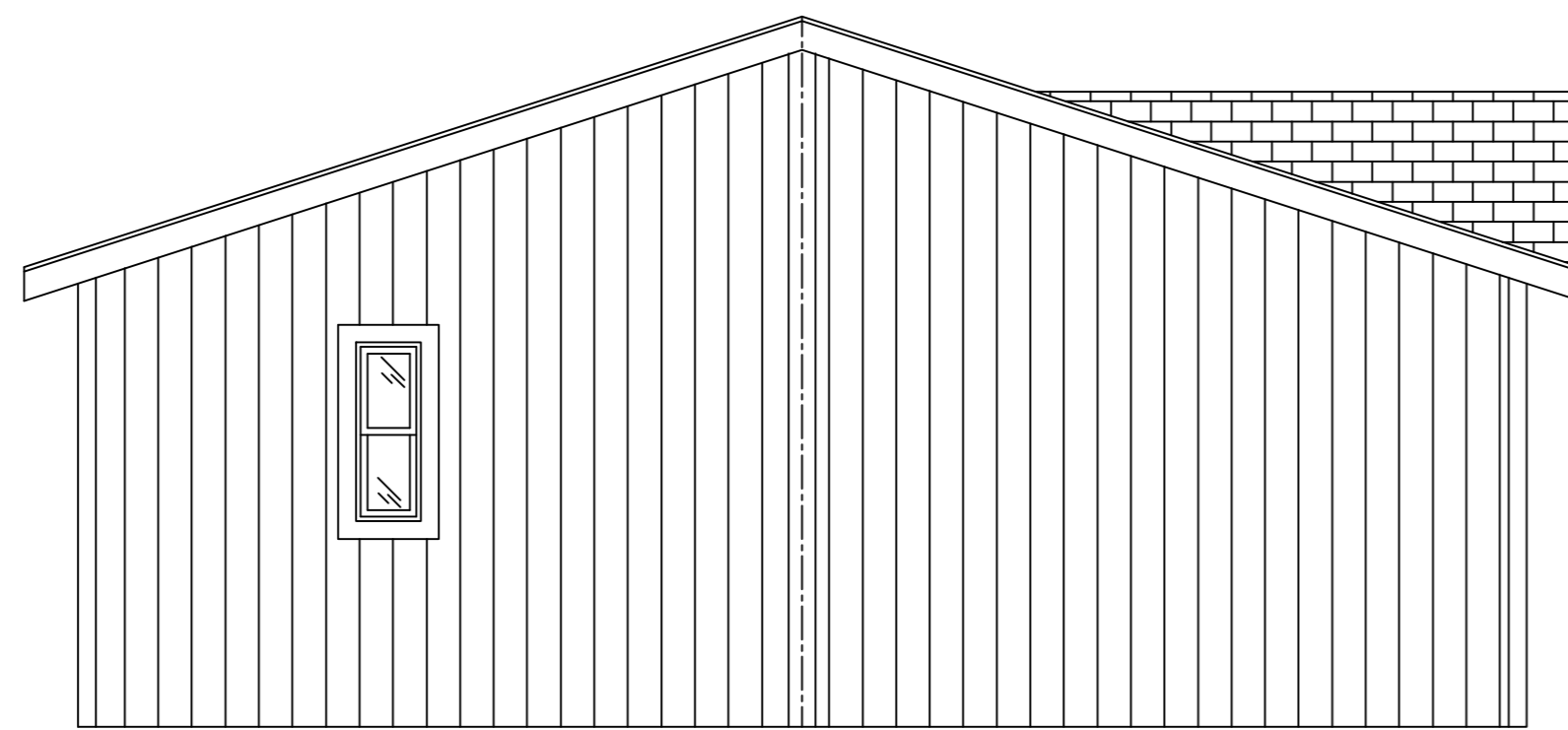
Revised: 8-14-2023

Copyright © Palm Harbor Homes, Inc. Because Palm Harbor Homes has a continuous product updating and improvement process, prices, plans, dimensions, features, materials, specifications and availability are subject to change without notice or obligation. Please refer to working drawings for actual dimensions. Renderings and floor plans are artist's depictions only and may vary from the completed home. Square footage calculations and room dimensions are approximate subject to industry standards.

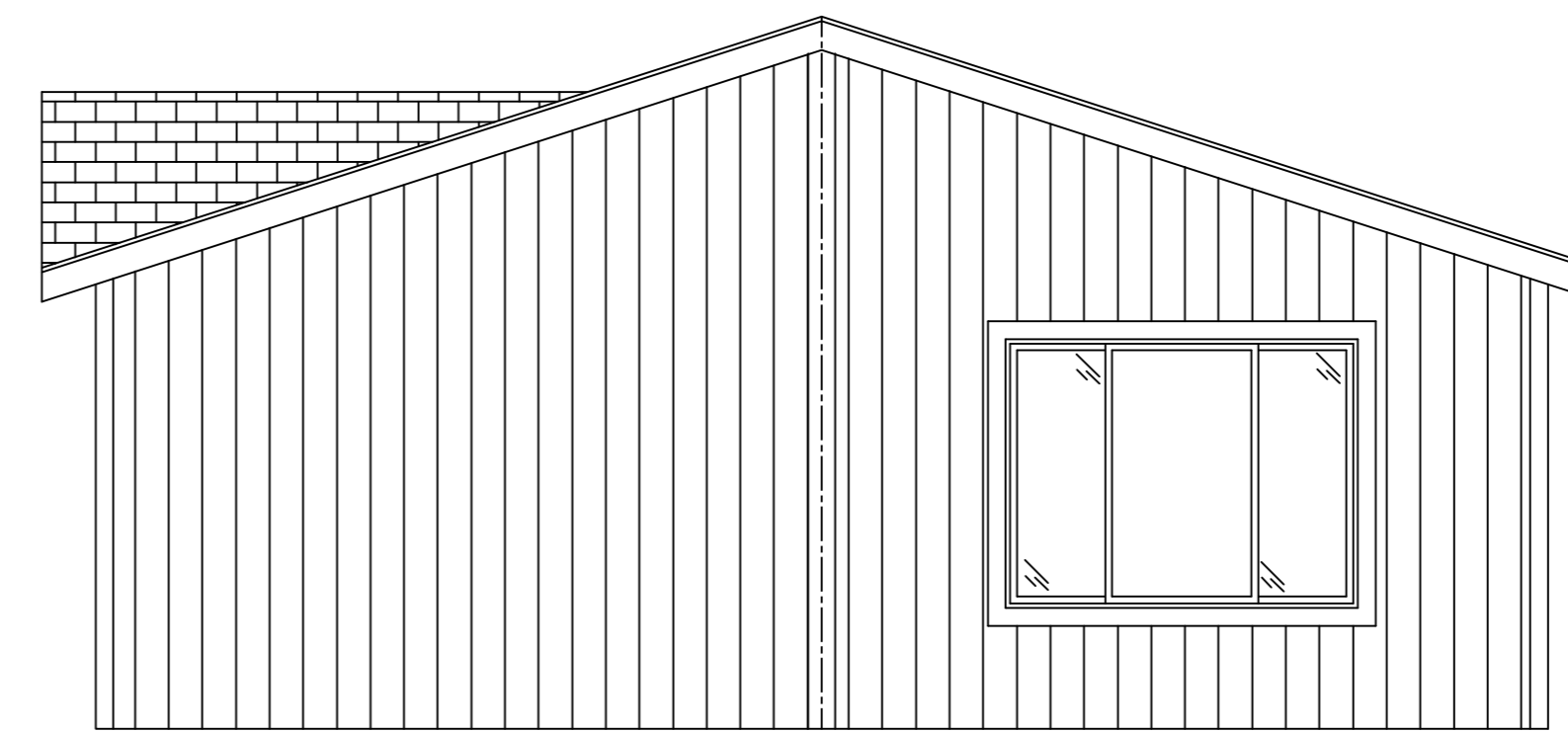




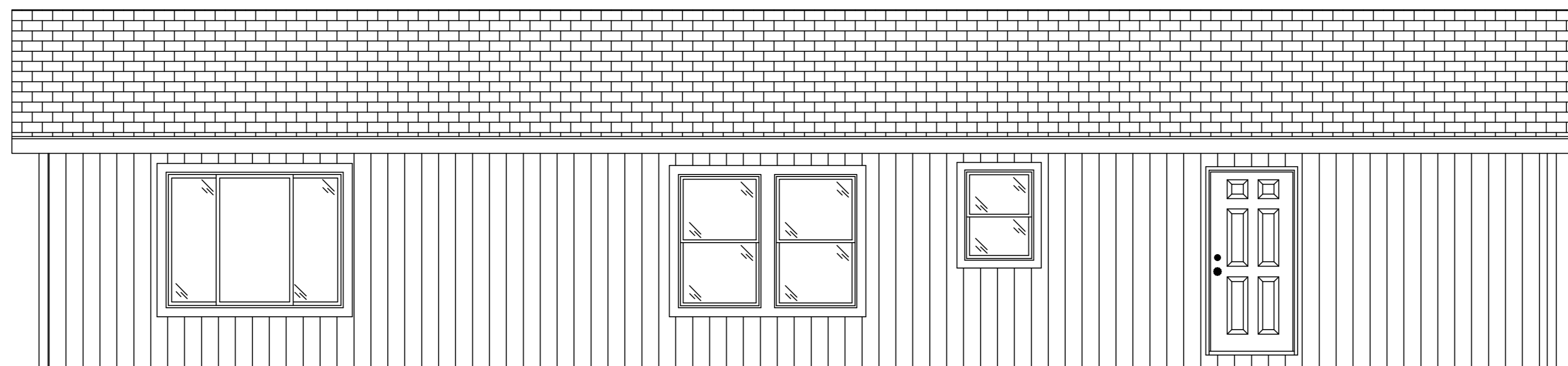
Front Elevation
EXCLUSIVE EXTERIOR
4/12 Roof Pitch



Left Elevation



Right Elevation



Rear Elevation

Klamath

Model: 4P56S49

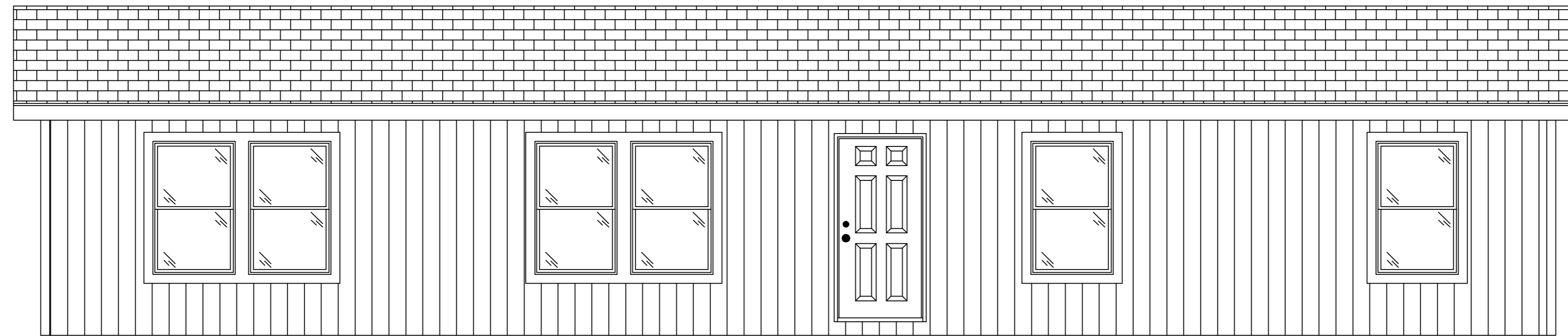
4G28563A

1512 Sq.Ft.

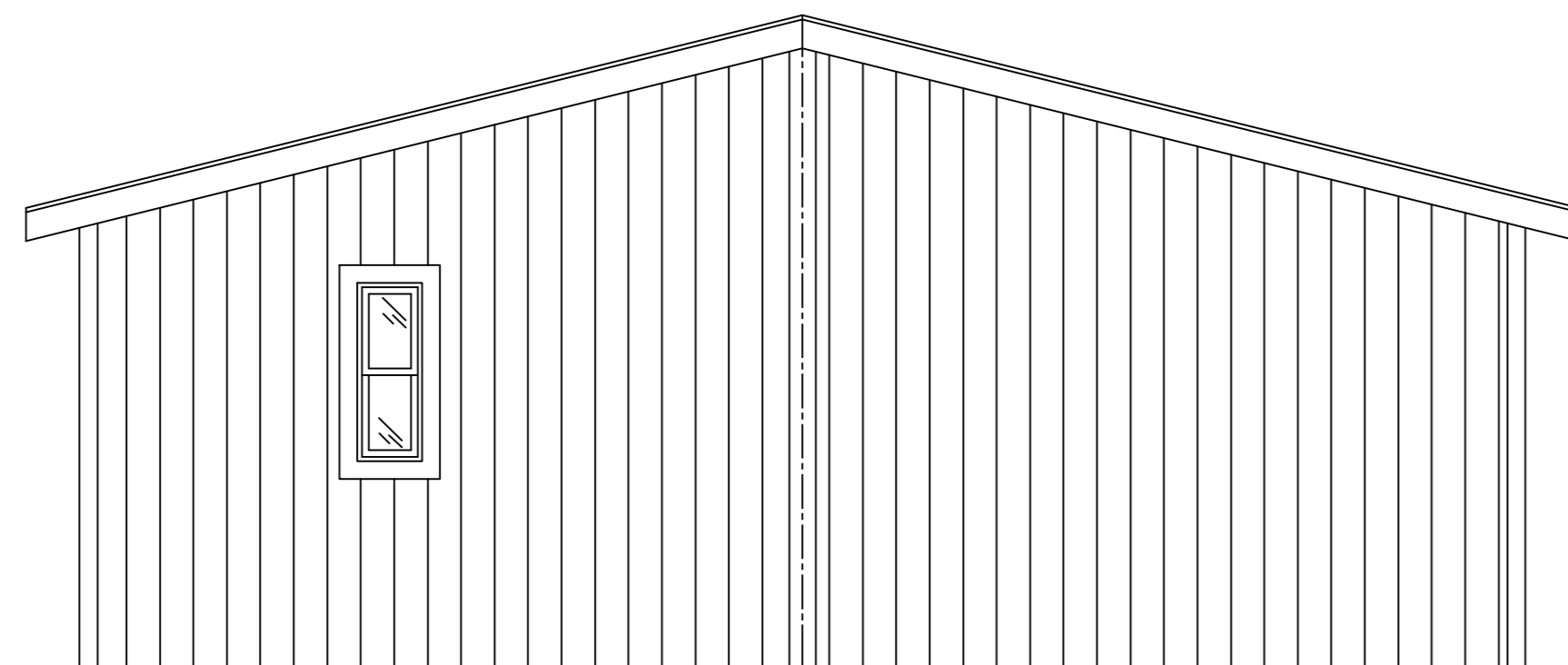
Revised: 8-14-2023

Copyright © Palm Harbor Homes, Inc. Because Palm Harbor Homes has a continuous product updating and improvement process, prices, plans, dimensions, features, materials, specifications and availability are subject to change without notice or obligation. Please refer to working drawings for actual dimensions. Renderings and floor plans are artist's depictions only and may vary from the completed home. Square footage calculations and room dimensions are approximate subject to industry standards.

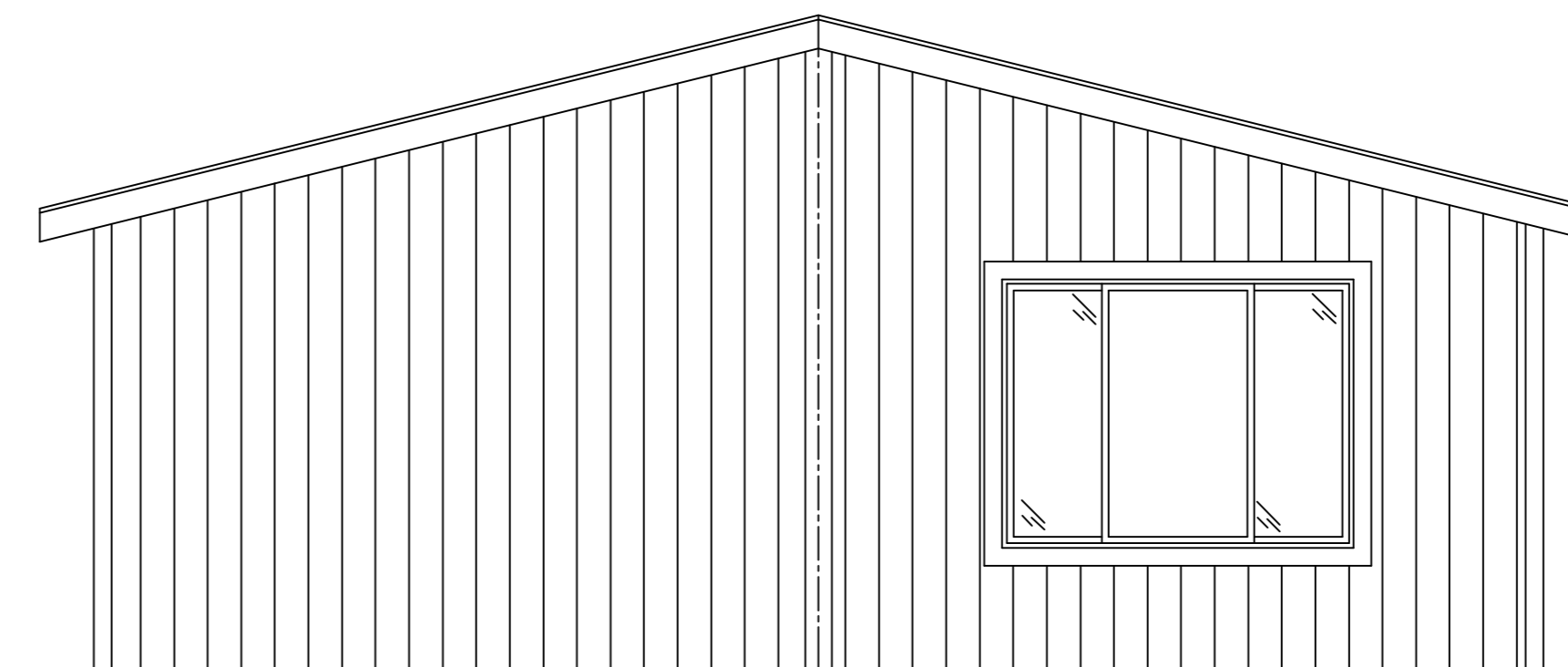




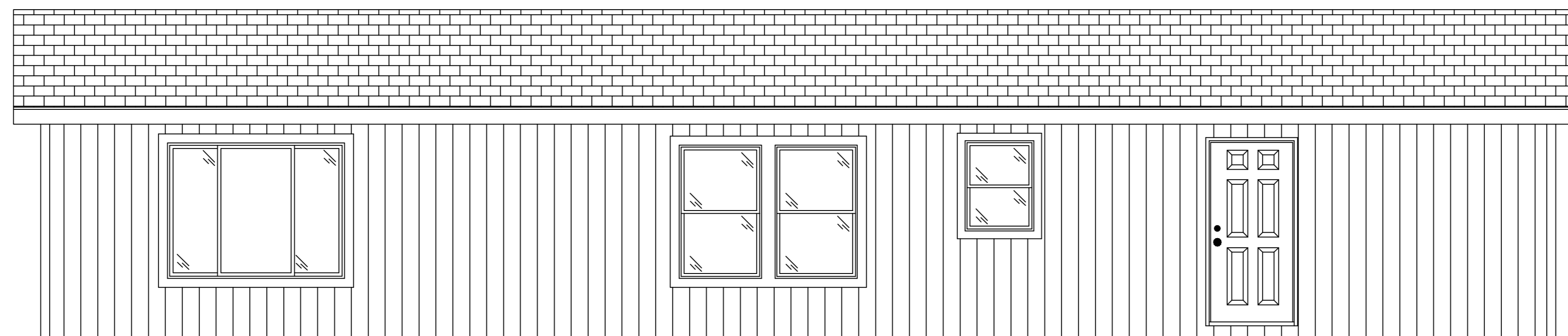
Front Elevation
Standard 3/12 Roof Pitch



Left Elevation



Right Elevation



Rear Elevation

Klamath

Model: 4P56S49

4G28563A

1512 Sq.Ft.

Revised: 8-14-2023

Copyright © Palm Harbor Homes, Inc. Because Palm Harbor Homes has a continuous product updating and improvement process, prices, plans, dimensions, features, materials, specifications and availability are subject to change without notice or obligation. Please refer to working drawings for actual dimensions. Renderings and floor plans are artist's depictions only and may vary from the completed home. Square footage calculations and room dimensions are approximate subject to industry standards.

